


Referenz-Nr. Order No.	Spannhöhe Clamping Height				Spannhub Clamping Stroke	L2	L3	L1	L4	W	L	H4	B	Dp
	Kontakt bearbeitete Fläche Finished Surface Contact		Kontakt grobe Fläche Rough Surface Contact											
	Min.	Max.	Min.	Max.										
1479-0618	21.8 (21.8-24.8)	23.8 (23.8-26.8)	21.4 (21.4-24.4)	23.4 (23.4-26.4)	3	22	6	26	11.5	36	18	6	4.3	27
1479-0823	30.3 (30.3-34.3)	32.3 (32.3-36.3)	31.2 (31.2-35.2)	33.2 (33.2-37.2)	4	30	8	35	15.3	45	23	8	5.3	34
1479-1030	30.5 (30.5-34.5)	37 (37-41)	31.5 (31.5-35.5)	38 (38-42)	4	37	8	45	20.7	65	30	12	8.4	48
1479-1240	34.5 (34.5-39.5)	44 (44-49)	37 (37-42)	46.5 (46.5-51.5)	5	45	8	55	25.4	85	40	15	10.5	64

Referenz-Nr. Order No.	H	D	W1	W2	H2	H1	M1	H3	W3	M	Spannkraft Clamping Force KgF	zulässiges Drehmoment Allowable Screw Torque (N-m)	 (g)
1479-0618	56.5	18	8	4.3	10	29	M4	22.8	10	M6	230	6	94
1479-0823	73.5	23	10	5.3	14	39	M5	28.5	13	M8	360	10.5	210
1479-1030	91	30	16	8.4	18	48	M8	45.5	17	M10	600	30	515
1479-1240	114	40	20	10.4	22	58	M10	57	19	M12	750	45	1100

1479

Körper

- Gehärtet
- Schwarz beschichtet

Spannspindel

- Schwarz beschichtet

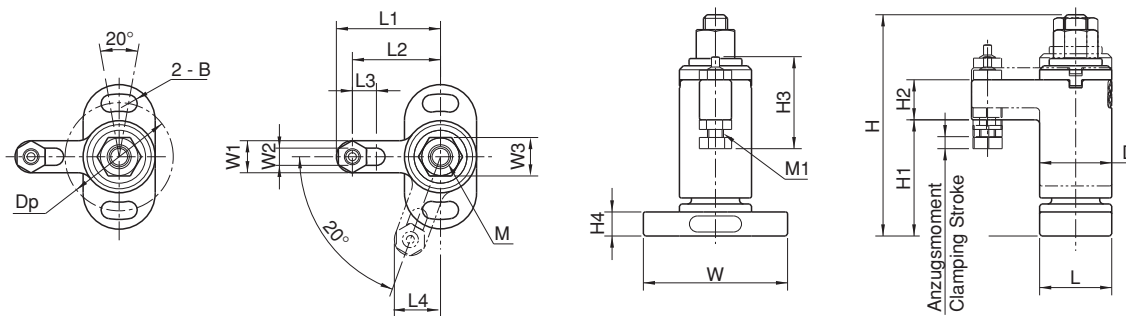
1479

Body

- Hardened
- Black coated

Clamping Spindle

- Black coated



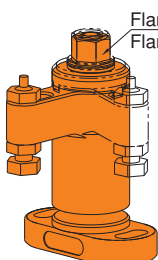
Hinweis

- Spannen mit Drehmomentschlüssel

Note

- Do not use a power tool (impact wrench etc.) to turn the flange nut, for damage prevention.

Verwendung / How To Use

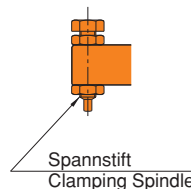


Flanschmutter
Flange Nut

Den Flansch in der Spannposition drehen.

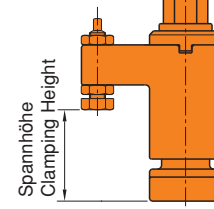
Turning the flange nut allows the clamp arm to swing into position for clamping.

Kontakt grobe Fläche
Rough Surface Contact



Spannstift
Clamping Spindle

Kontakt bearbeitete Fläche
Finished Surface Contact



Spannhöhe
Clamping Height